

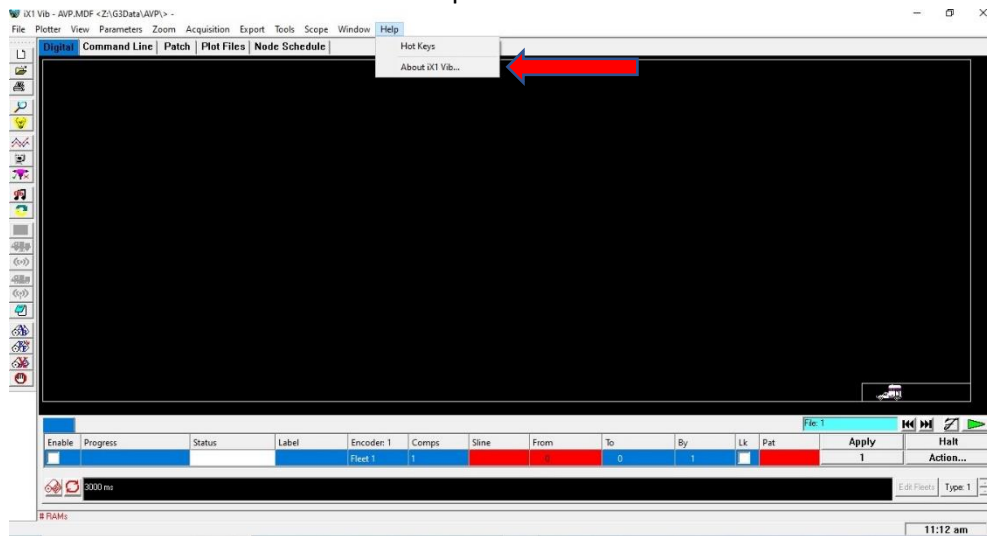
Renew/Update License in iX1 Software

Introduction:

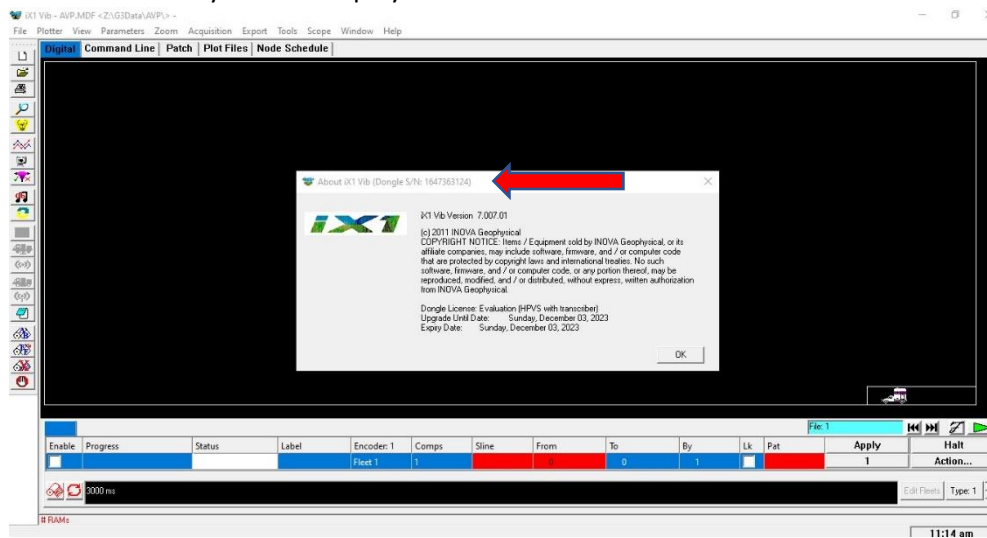
INOVA software require Licenses to run. Users need to provide System ID (Virtual or Physical) to the INOVA Personnel to obtain License.

Steps to do:

1. Run the iX1 software and click on Help – About iX1



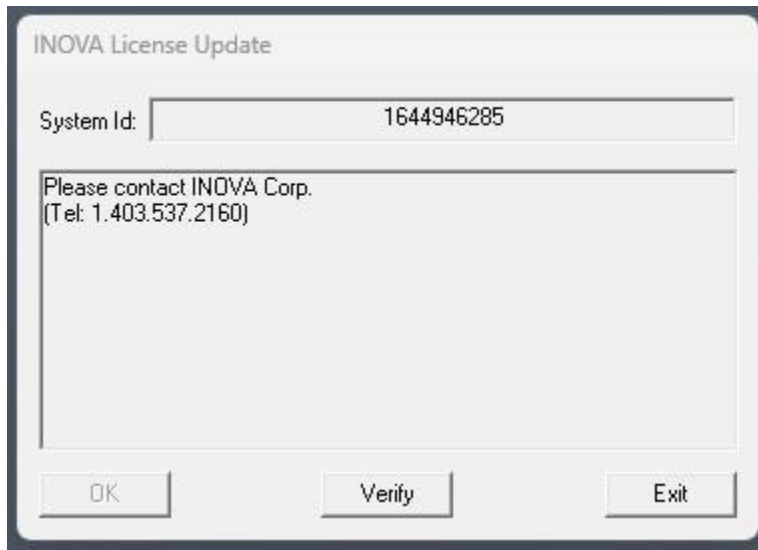
2. Note down the System ID displayed



3. Browse to the INOVA_ix1 folder in Acquisition drive. (E drive most of the time) and Run INOVAKeyUpdate application.

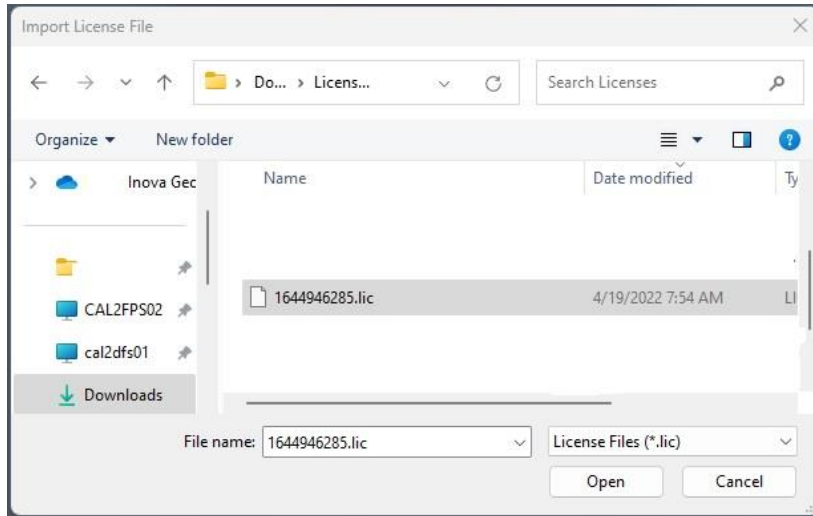


4. System ID noted and displayed ID must match in case of Physical Dongle ID (In case of virtual ID you need to make sure that window is kept open until you get the license file from INOVA update the software)

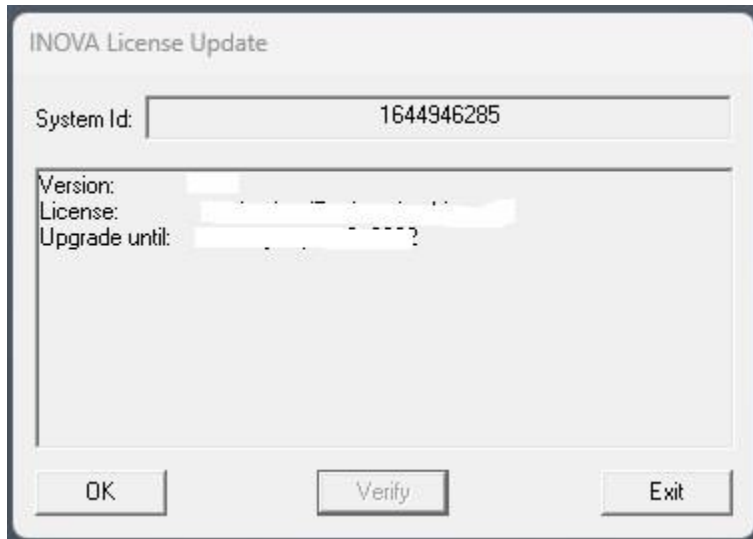


5. After receiving License file (.lic) from INOVA, download it and access the location it by clicking "Verify".

6. Browse the file and click Open.



7. Select the .lic license file and "OK" it.



The Version, type of License and Validity will be displayed.

8. For any version upgradation kindly contact customer support at customer.supportinovageo@inovageo.com
- 9.