

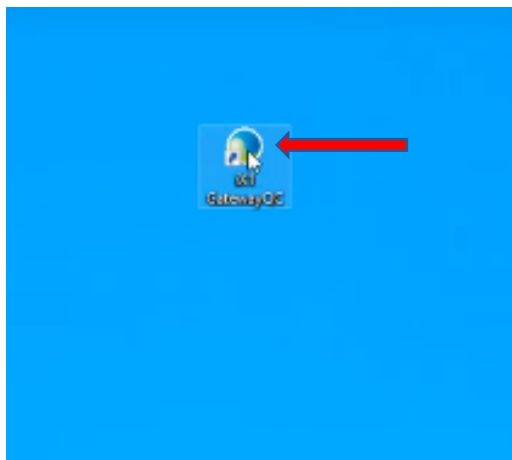
Update Gateway Software / Firmware

Introduction:

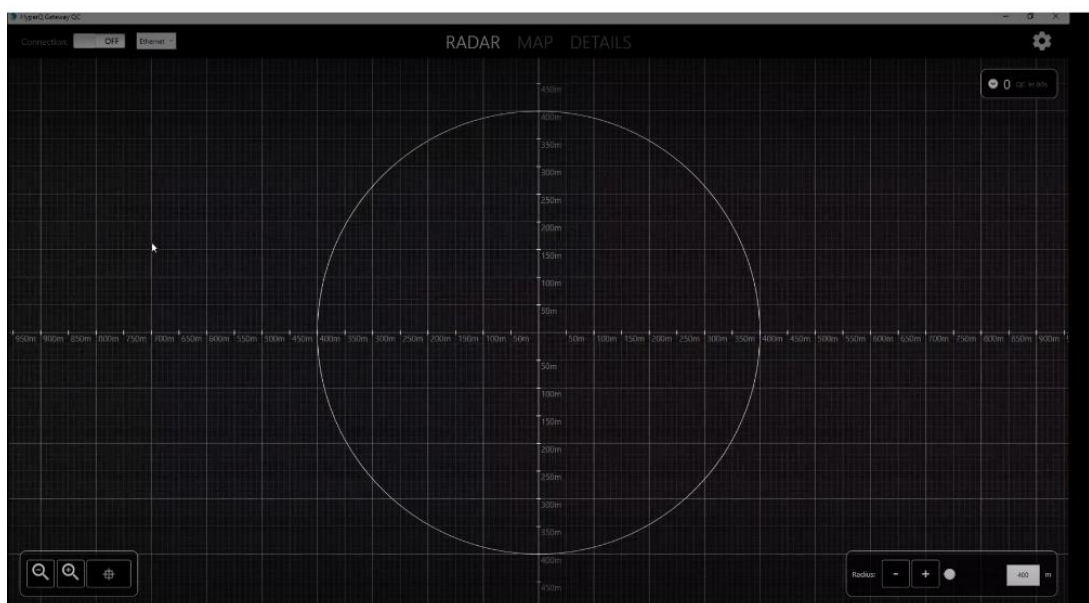
Gateway (Drone / Truck) software / firmware need to be updated when software / patch is released by INOVA.

Steps to do:

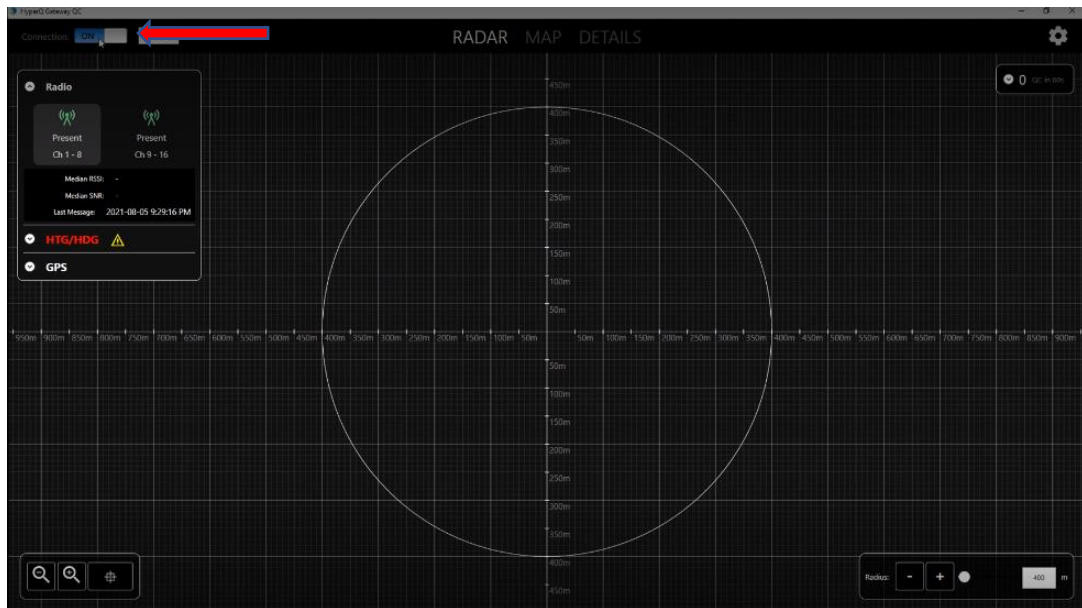
1. Run the Gateway QC software as shown below:



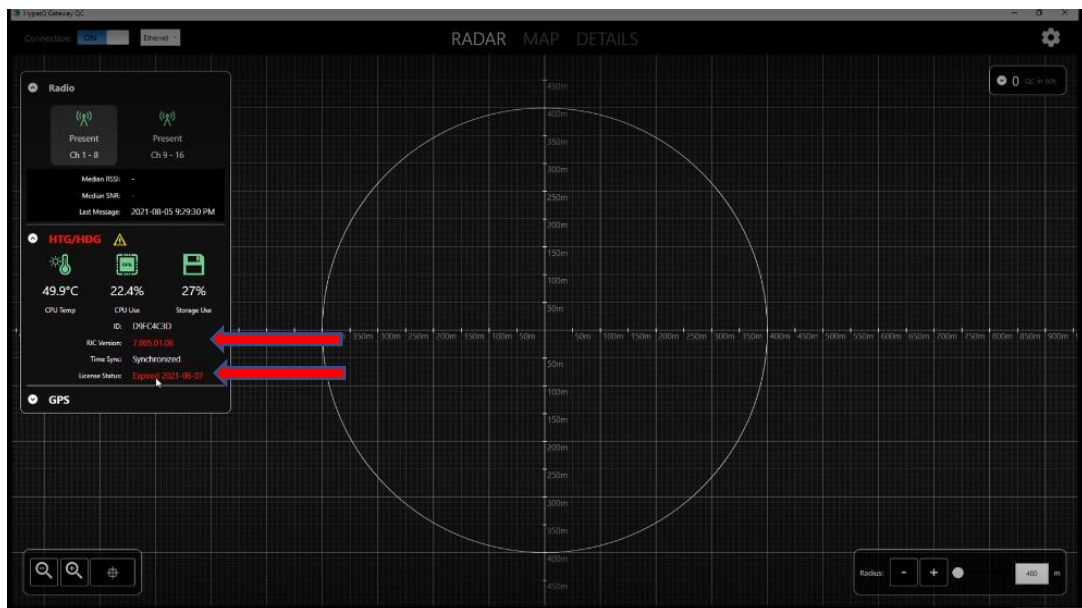
2. The following screen will be displayed:



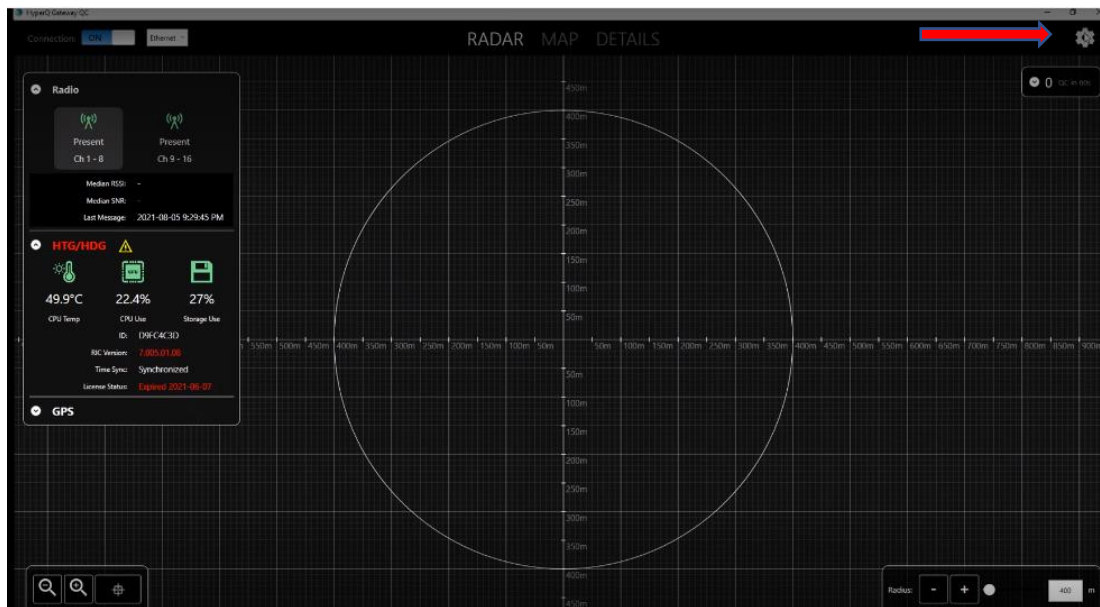
3. Turn on the “connection” to confirm Gateway is connected (See arrow)



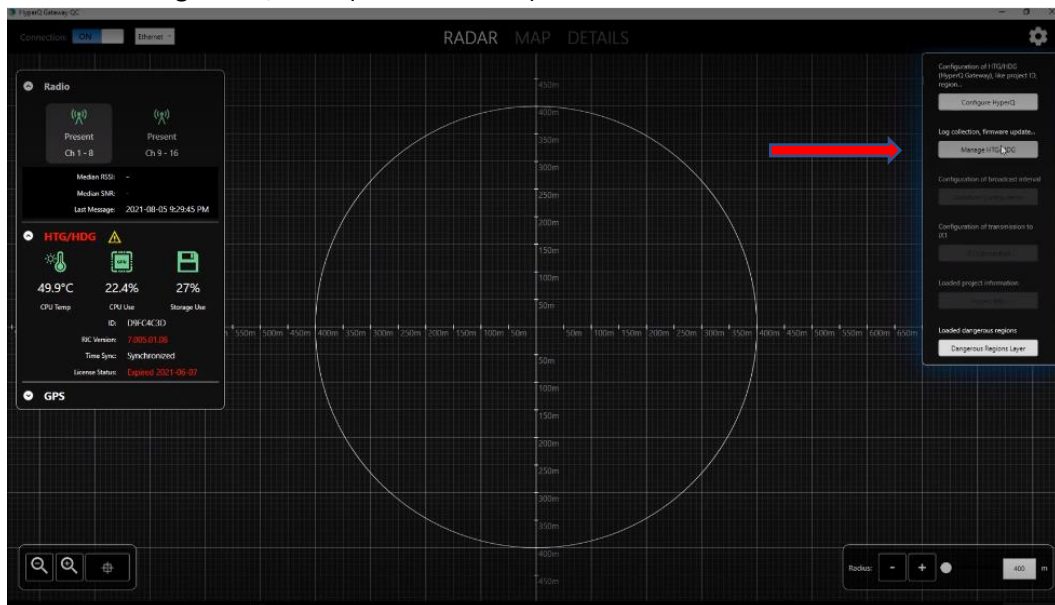
4. Any discrepancies / Fault will be seen as RED as shown in below picture (see RED arrow): **In this picture we can see Firmware & License has been expired.** So, both the firmware & license need to be updated. The firmware version is decided by the Software version installed. When software patch is released then we should make sure that gate way firmware is also updated. In this document we will see how the firmware is updated.



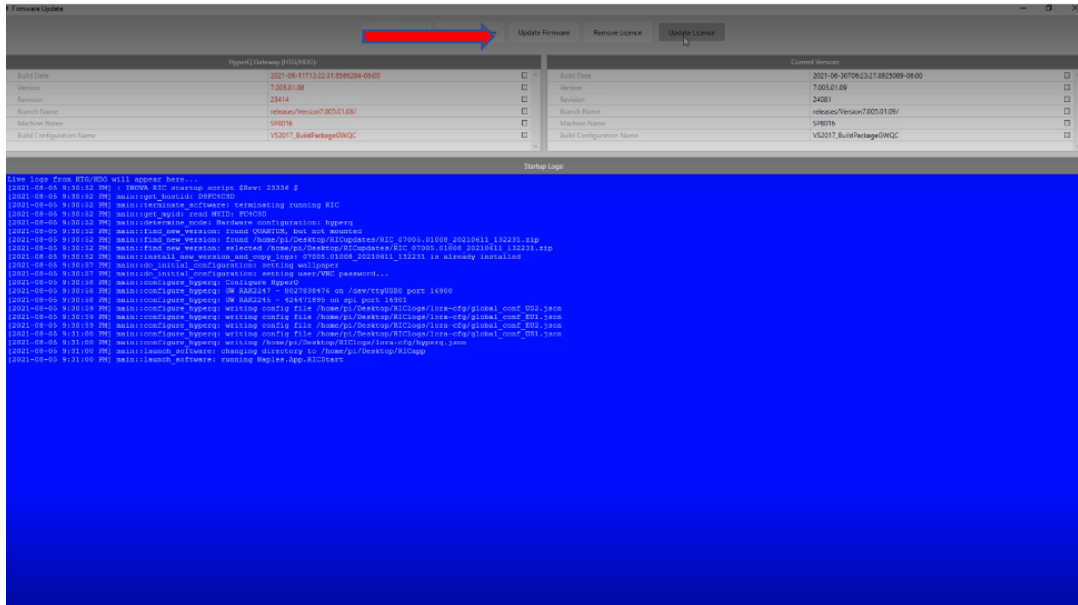
5. For upgrading the firmware click on the setting (RED arrow)



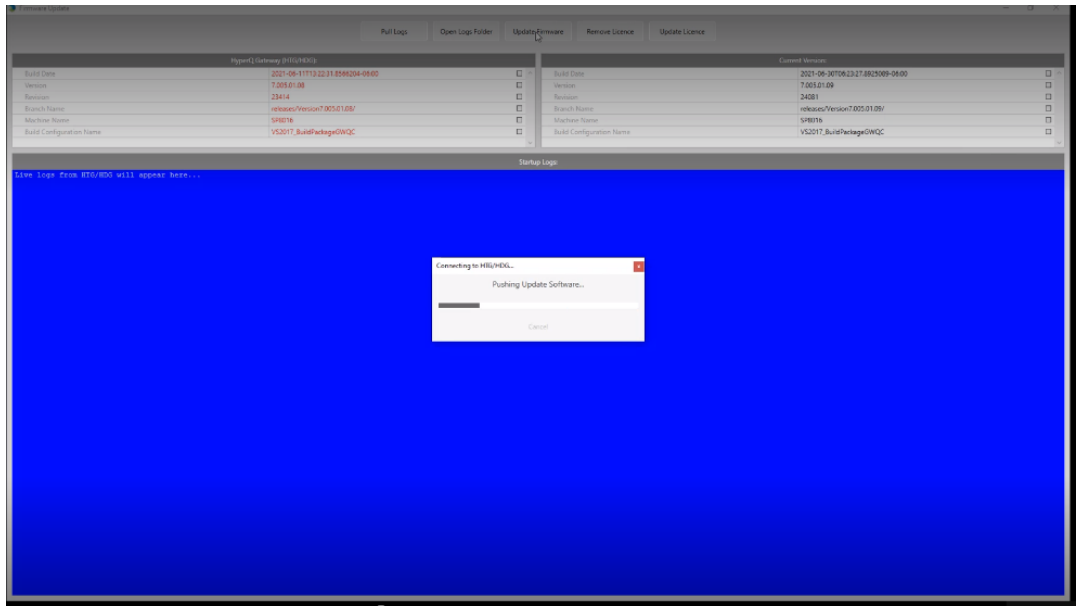
6. Click on Manage HTG / HDG (see RED arrow)



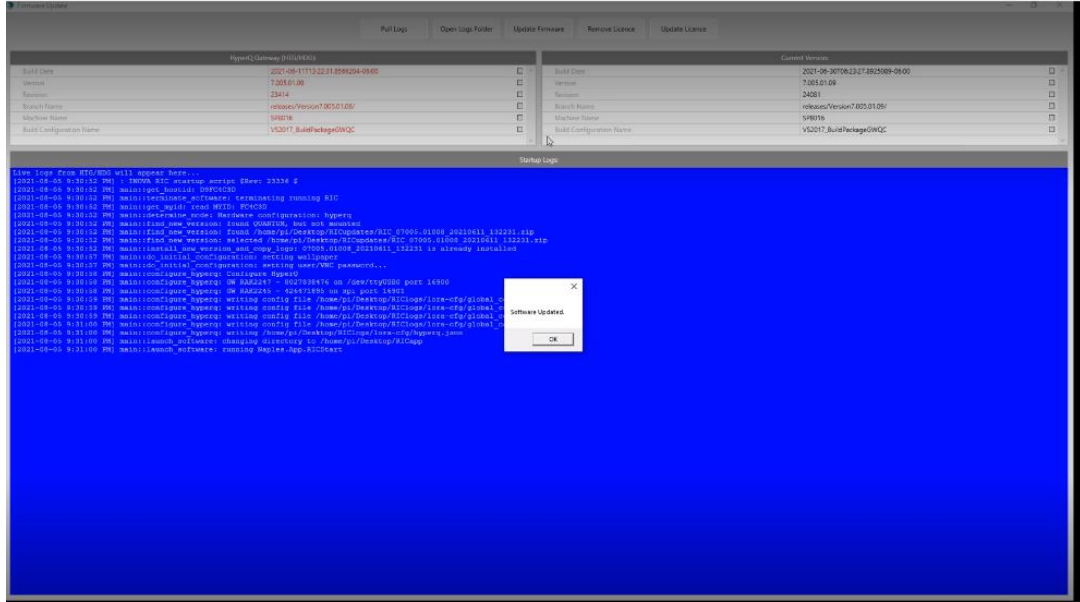
7. Select update Firmware:



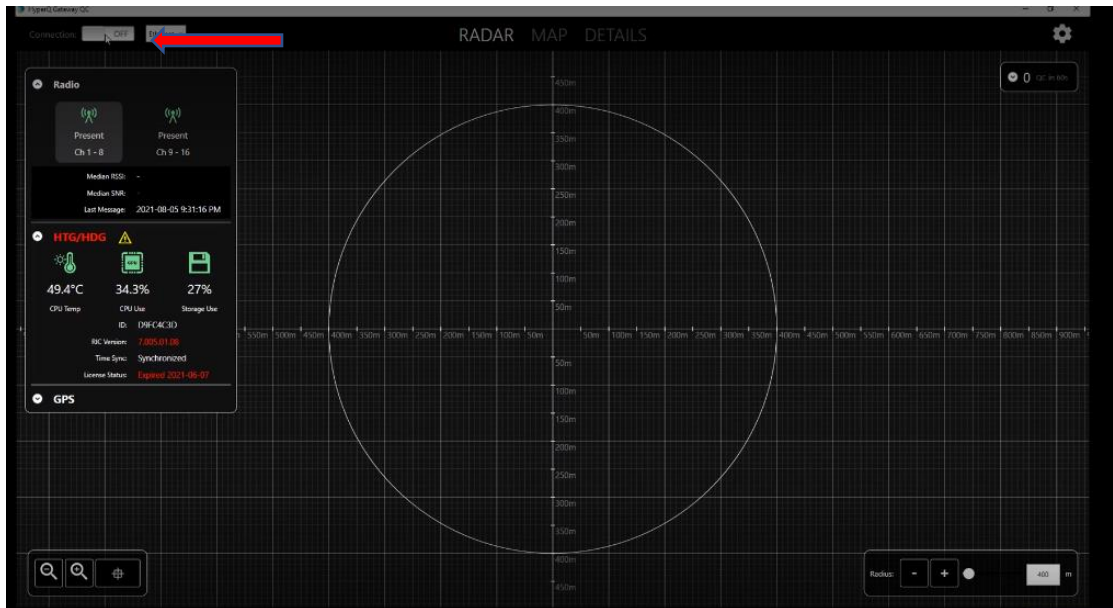
8. Wait till the Firmware is updated.



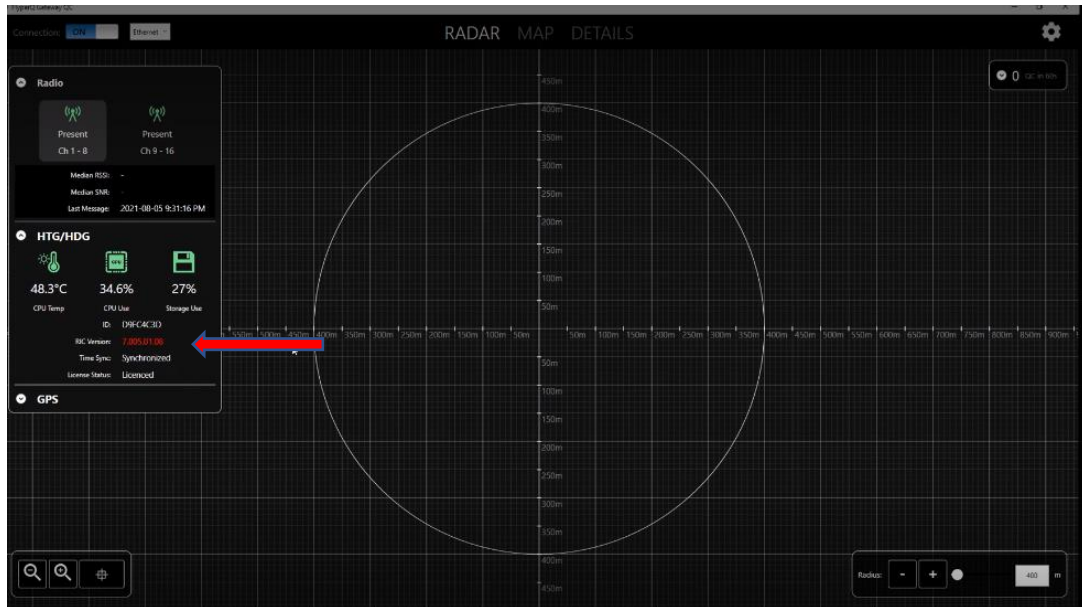
9. Click OK & Close the window.



10. Reset the Gateway by resetting the ON /OFF switch (See RED arrow).



11. After Reset check the firmware status. It should have been updated (firmware will depend on the software & patch no).



12. End.